



CALIFORNIA AUDIO TECHNOLOGY



Pro & Studio 2025 US Catalog



## Pro & Studio Products

### **Loudspeakers**

CAT Elite Pro Line Array	<a href="#">Spec Sheet</a>
CAT Elite Studio Monitor	<a href="#">Spec Sheet</a>
CAT Elite Studio Half-Field	<a href="#">Spec Sheet</a>

### **Subwoofers**

CAT Pro S4	<a href="#">Spec Sheet</a>
CAT Pro Dual S4	<a href="#">Spec Sheet</a>

### **Custom**

[Information](#)

### **Electronics**

200.6 Amplifier	<a href="#">Spec Sheet</a>
300.8 Amplifier	<a href="#">Spec Sheet</a>
1250.2 Amplifier	<a href="#">Spec Sheet</a>
12x12 DSP	<a href="#">Spec Sheet</a>

### **Services**

Off-Site Engineering	<a href="#">Information</a>
On-Site Engineering	<a href="#">Information</a>

### **Sample Systems**

[Information](#)



## CAT Elite Pro Line Array



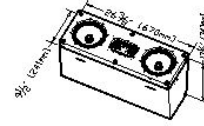
The CAT Elite Pro Line Array loudspeaker system integrates twin CAT Elite 8" copper phase plug curvilinear aluminum cone woofer drivers with twin CAT Elite 30mm silk-dome tweeters, which are available with optional wave guides for customized dispersion angles. The CAT Elite Pro Line Array is designed to be stacked in units 1 to 10 units tall, and suspended by rigging or installed within a permanent structure. Constructed with an HDF enclosure and a 1" thick CAT MBX105 ultra high-density driver baffle (CAT proprietary fiber-reinforced composite).

### Grilles

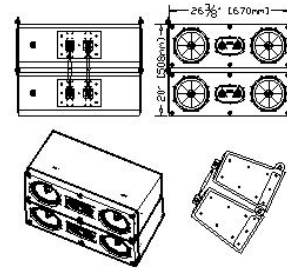
Most commonly, these loudspeakers are installed without grilles. However, many grille options exist.

[Click here to see a few grille examples](#)

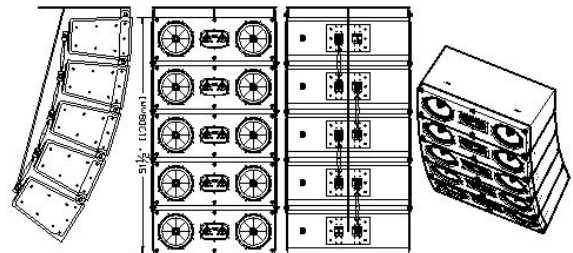
CAT Elite Pro 1x Line Array



CAT Elite Pro 2x Line Array



CAT Elite Pro 5x Line Array



### Specifications

<b>Model</b> CAT Elite 700 IW	<b>Channels</b> 1 to 10
<b>Maximum SPL @ 1m</b> 136dB	<b>Frequency Response</b> 29Hz-24kHz
<b>Minimum Amplifier Power</b> 300W @ 4Ω	<b>Maximum Amplifier Power</b> Unlimited* @ 4Ω
<b>Nominal Impedance</b> 4Ω	<b>Sensitivity</b> 90dB

*\*Unlimited max. clean power, when calibrated by California Audio Technology w/ CAT MBX DSP*

### Recommended Amplification

**CAT MBX 1250.2 Amplifier**

**CAT 300.8 Amplifier**

[Previous Page](#)

[Return To Product List](#)

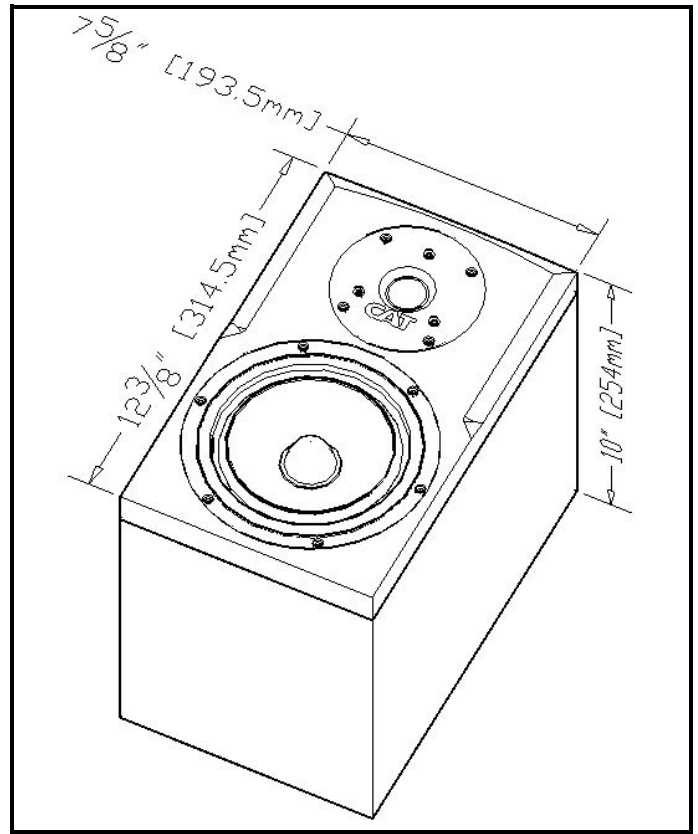
## CAT Elite 200EX Studio Monitor



The CAT Elite 200EX Studio Monitor loudspeaker system integrates a CAT Elite 8.5" copper phase plug curvilinear aluminum cone woofer driver with the CAT Elite 30mm silk-dome tweeter, providing the CAT Elite 200EX Studio Monitor with extended SPL and the most critical performance benefits of the renowned CAT MBX tweeter. Constructed with an HDF enclosure and a 1" thick CAT MBX105 ultra high-density machined faceplate (CAT proprietary fiber-reinforced composite).

### Grilles

Most commonly, these loudspeakers do not require grilles. However, many grille options exist.



[Click here to see a few grille examples](#)

### Specifications

<b>Model</b> CAT Elite 200EX Studio Monitor	<b>Channels</b> 1
<b>Maximum SPL @ 1m</b> 125dB	<b>Frequency Response</b> 30Hz-24kHz
<b>Minimum Amplifier Power</b> 300W @ 4Ω	<b>Maximum Amplifier Power</b> 650W @ 4Ω
<b>Nominal Impedance</b> 4Ω	<b>Sensitivity</b> 89dB

### Recommended Amplification

**CAT 300.8 Amplifier**

[Previous Page](#)

[Return To Product List](#)

## CAT Elite 700S5 Studio Half Field

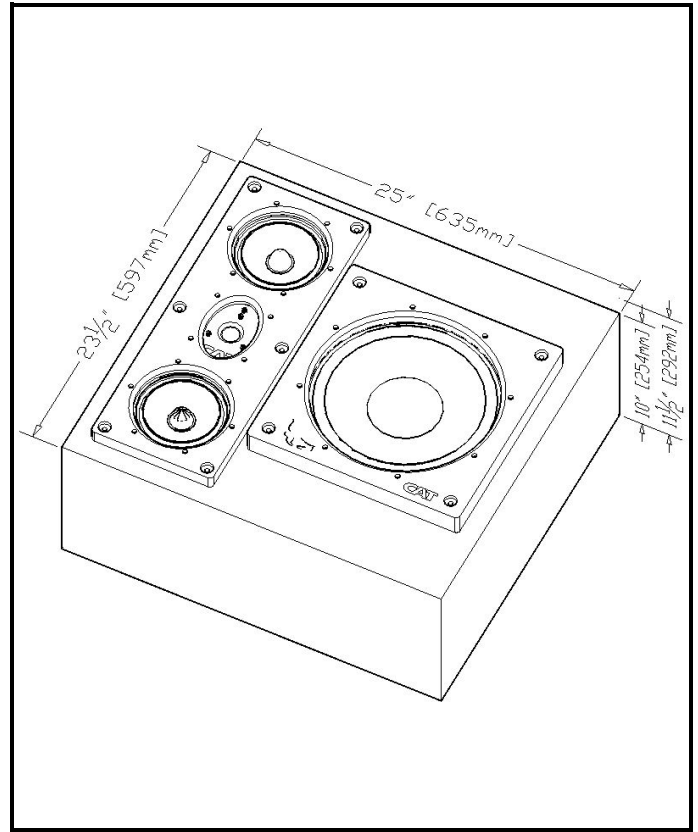


The CAT Elite 700S5 Studio Half Field loudspeaker system integrates a 12" curvilinear aluminum cone subwoofer with twin CAT Elite 6.5" copper phase plug curvilinear aluminum cone woofer drivers with the CAT Elite 30mm silk-dome tweeter. Constructed with an HDF enclosure and CAT MBX105 ultra high-density driver baffle (CAT proprietary fiber-reinforced composite).

### Grilles

Most commonly, these loudspeakers do not require grilles. However, many grille options exist.

[Click here to see a few grille examples](#)



### Specifications

**Model**  
CAT Elite 700S5 Studio Half Field

**Channels**  
2

**Maximum SPL @ 1m**  
131dB

**Frequency Response**  
20Hz-24kHz

**Minimum Amplifier Power**  
300W @ 4Ω

**Maximum Amplifier Power**  
Unlimited\* @ 4Ω

**Nominal Impedance**  
4Ω

**Sensitivity**  
90dB

*\*Unlimited max. clean power, when calibrated by California Audio Technology w/ CAT MBX DSP*

### Recommended Amplification

**CAT MBX 1250.2 Amplifier**

**CAT 300.8 Amplifier**

[Previous Page](#)

[Return To Product List](#)

## CAT Pro S4

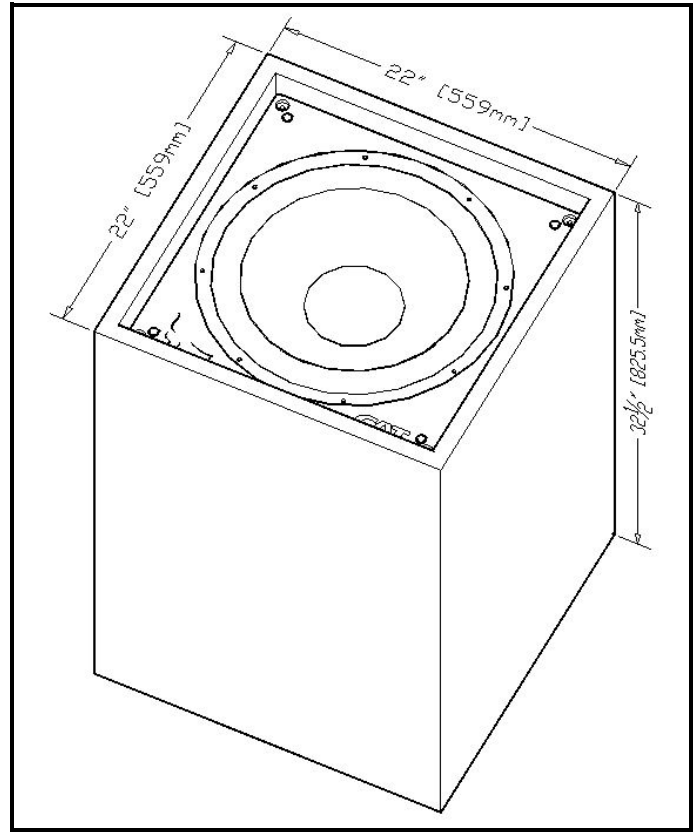


This Dual Voice Coil 18" curvilinear aluminum cone subwoofer will accurately reproduce low frequencies down below 15Hz. An oversized ceramic magnet provides massive power handling capabilities. Constructed with an HDF enclosure and a 1" thick CAT MBX105 ultra high-density driver baffle (CAT Propriety fiber-reinforced composite).

### Grilles

Most commonly, these loudspeakers are installed behind acoustic fabric and do not require grilles. However, many grille options exist.

[Click here to see a few grille examples](#)



### Specifications

<b>Model</b> CAT Pro S4	<b>Channels</b> 2
<b>Maximum SPL @ 1m</b> 128dB	<b>Frequency Response</b> 10Hz-1000kHz
<b>Minimum Amplifier Power</b> 300W @ 4Ω	<b>Maximum Amplifier Power</b> 650W @ 4Ω
<b>Nominal Impedance</b> 4Ω	<b>Sensitivity</b> 90dB

### Recommended Amplification

**CAT 300.8 Amplifier**

[Previous Page](#)

[Return To Product List](#)

## CAT Pro Dual S4

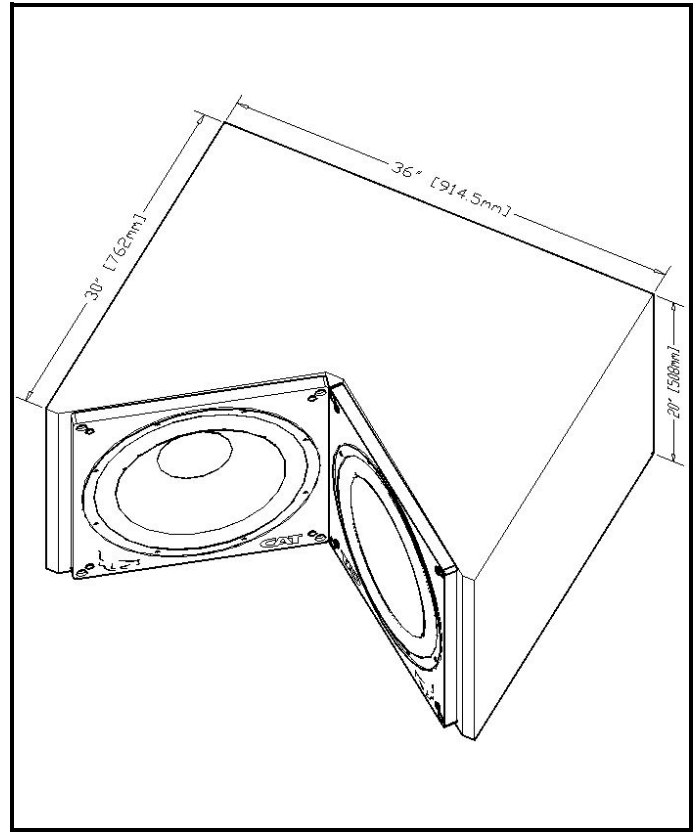


This double-driver, dual voice coil 18" curvilinear aluminum cone subwoofer pair will accurately reproduce low frequencies down below 15Hz. An oversized ceramic magnet provides massive power handling capabilities. Constructed with an HDF enclosure and a 1" thick CAT MBX105 ultra high-density driver baffle (CAT Propriety fiber-reinforced composite).

### Grilles

Most commonly, these loudspeakers are installed behind acoustic fabric and do not require grilles. However, many grille options exist.

[Click here to see a few grille examples](#)



### Specifications

<b>Model</b> CAT Pro Dual S4	<b>Channels</b> 4
<b>Maximum SPL @ 1m</b> 134dB	<b>Frequency Response</b> 10Hz-1000kHz
<b>Minimum Amplifier Power</b> 300W @ 4Ω	<b>Maximum Amplifier Power</b> 650W @ 4Ω
<b>Nominal Impedance</b> 4Ω	<b>Sensitivity</b> 90dB

### Recommended Amplification

**CAT 300.8 Amplifier**

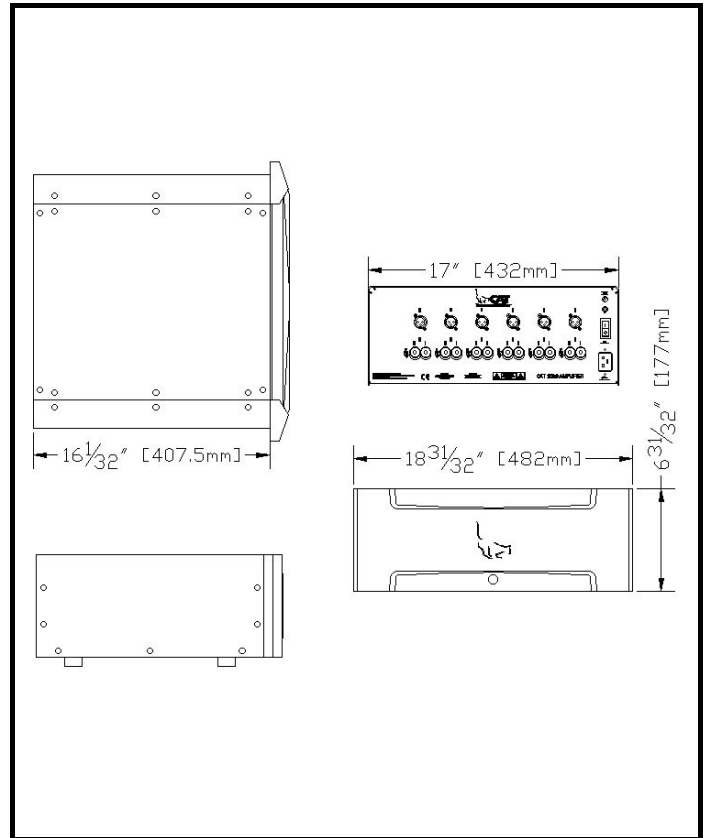
[Previous Page](#)

[Return To Product List](#)

## CAT 200.6 Amplifier



The CAT 200.6 High Definition Power Amplifier delivers fast, accurate & clean power. Utilizing large, custom, audiophile quality, high-current toroidal transformers, filter capacitors and output transistors. This amp delivers over 200 pure watts x 6 channels into 4 ohm loads and can properly power demanding loudspeaker loads down to 2 ohms! Gold flashed circuit boards, and XLR isolation transformer protected inputs are some key performance features!



### Specifications

**Model**  
CAT 200.6

**Signal to Noise Ratio "A Weighted"**  
> 120dB Below FTC Full Power

**Heat Dissipation**  
2350 BTU/Hour

**Crosstalk**  
> -100dB from 20Hz-20kHz

**Amplifier Class**  
Class AB

**Slew Rate**  
40 Volts/ $\mu$ s

**Output Power (All Ch. Driven)**  
200W @ 4 $\Omega$

**Mains and Power Supply**  
C19 (20 Amp)

**Power Supply Type**  
Toroidal

**Power Outputs**  
6

**Main Rating**  
115V 15A / 230V 8A

**Inputs (Quantity and Type)**  
6 - XLR

**Frequency Response**  
5Hz-55kHz +/- 3dB

**Weight**  
43 kg

**Distortion THD+N (20Hz-10kHz)**  
< 0.3% @ FTC Full Power

**Dimensions (W x H x D)**  
483mm x 177mm x 419mm

[Previous Page](#)

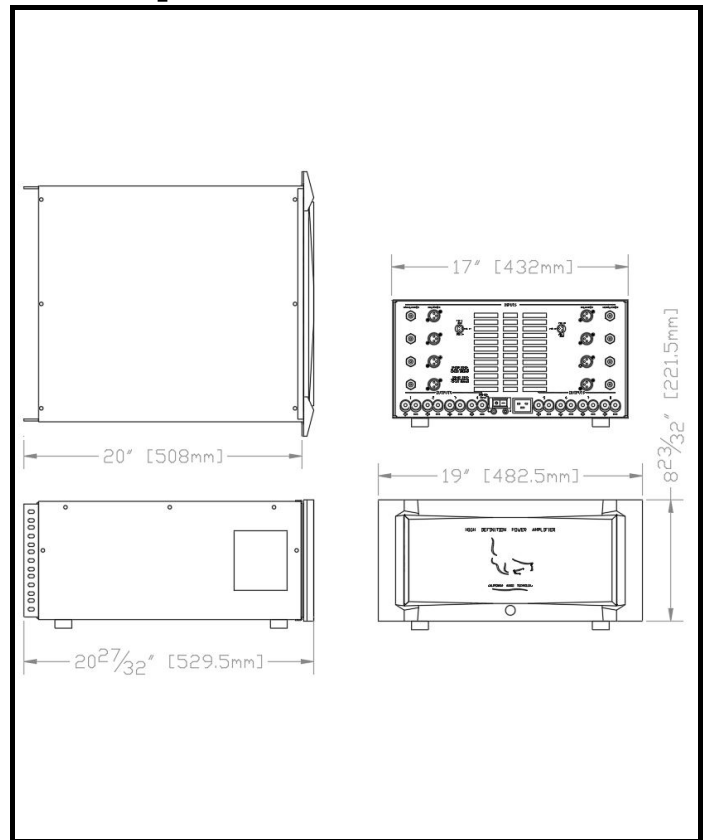
[Return To Product List](#)



## CAT 300.8 SE Amplifier



The CAT 300.8 SE High Definition Power Amplifier delivers fast, accurate & clean power. Utilizing extremely large, custom, audiophile quality, high-current toroidal transformers, filter capacitors and output transistors. This amp delivers over 300 pure watts x 8 channels into 4 ohm loads and can properly power demanding loudspeaker loads down to 2 ohms! Tunnel ram quiet-fan cooled, gold flashed circuit boards, XLR isolation transformer protected inputs & "Lightwave" optical comparator protection are some key performance features!



### Specifications

<b>Model</b> CAT 300.8 SE	<b>Signal to Noise Ration "A Weighted"</b> > 120dB Below FTC Full Power
<b>Heat Dissipation</b> 2350 BTU/Hour	<b>Crosstalk</b> > -100dB from 20Hz-20kHz
<b>Amplifier Class</b> Class AB	<b>Slew Rate</b> 40 Volts/ $\mu$ s
<b>Output Power (All Ch. Driven)</b> 300W @ 4 $\Omega$	<b>Mains and Power Supply</b> C19 (20 Amp)
<b>Power Supply Type</b> Toroidal	<b>Power Outputs</b> 8
<b>Main Rating</b> 115V 15A / 230V 8A	<b>Inputs (Quantity and Type)</b> 8 - XLR
<b>Frequency Response</b> 5Hz-55kHz +/- 3dB	<b>Weight</b> 61 kg
<b>Distortion THD+N (20Hz-10kHz)</b> < 0.3% @ FTC Full Power	<b>Dimensions (W x H x D)</b> 483mm x 222mm x 530mm

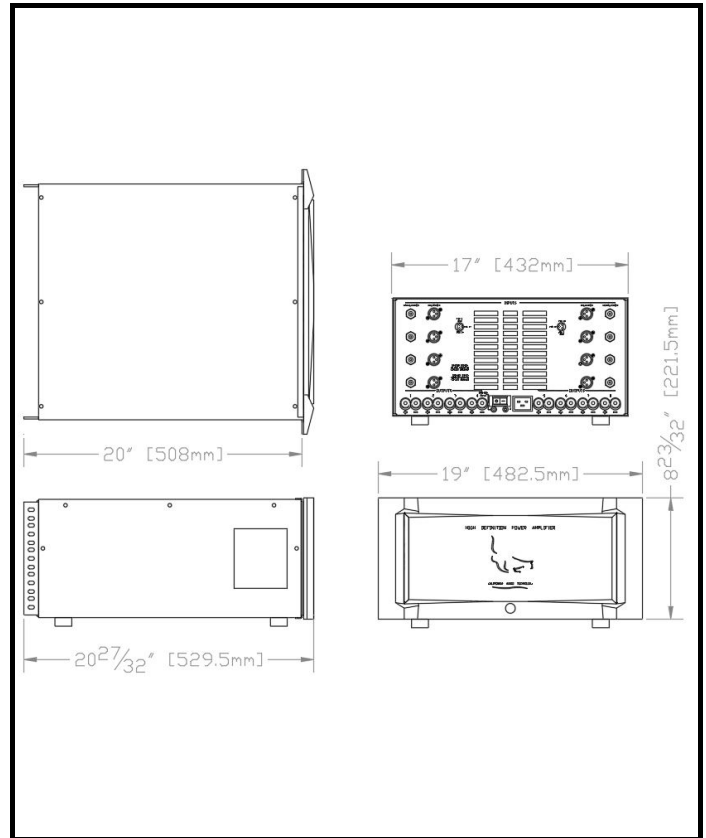
[Previous Page](#)

[Return To Product List](#)

## CAT MBX 1250.2 FD XPR Amplifier



The CAT MBX 1250.2 FD XPR ultra high performance amplifier incorporates two 1250(+) watt mono-block "FD" fully differential output stage amplifiers in one chassis. This design doubles the slew rate, providing substantially increased speed, accuracy, musical realism, and far less listening fatigue at all volume levels. With 40 audiophile output transistors, over one Farad (1,000,000uF) of filter capacitance, and two proprietary toroidal transformers. Reliability (thanks to state of the art "Lightwave" protection), audiophile performance, "FD" speed and massive power (to drive the relentless demands of proprietary CAT MBX drivers - accuracy, speed, excursion, & extremely low impedance). All showcased in this industrially designed, CNC milled amplifier chassis that evokes the finest exotic automobiles!



### Specifications

<b>Model</b> CAT MBX 1250.2 FD XPR	<b>Signal to Noise Ration "A Weighted"</b> > 120dB Below FTC Full Power
<b>Heat Dissipation</b> 2550 BTU/Hour	<b>Crosstalk</b> > -100dB from 20Hz-20kHz
<b>Amplifier Class</b> Class AB	<b>Slew Rate</b> 40 Volts/ $\mu$ s
<b>Output Power (All Ch. Driven)</b> 1250W @ 4 $\Omega$	<b>Mains and Power Supply</b> (2x) C19 (20 Amp)
<b>Power Supply Type</b> Toroidal	<b>Power Outputs</b> 2
<b>Main Rating</b> (2x) 115V 15A / 230V 8A	<b>Inputs (Quantity and Type)</b> 2 - XLR
<b>Frequency Response</b> 5Hz-55kHz +/- 3dB	<b>Weight</b> 65 kg
<b>Distortion THD+N (20Hz-10kHz)</b> < 0.3% @ FTC Full Power	<b>Dimensions (W x H x D)</b> 483mm x 267mm x 597mm

[Previous Page](#)

[Return To Product List](#)

## Grille Options



Custom grilles are limited only by your imagination! CAT can manufacture custom grilles in CNC milled billet aluminum, CNC milled fiberglass epoxy resin, fabric wrapped, stamped steel, or any other material of your choice. Here are just a few examples of potential grille style choices offered.



[Previous Page](#)

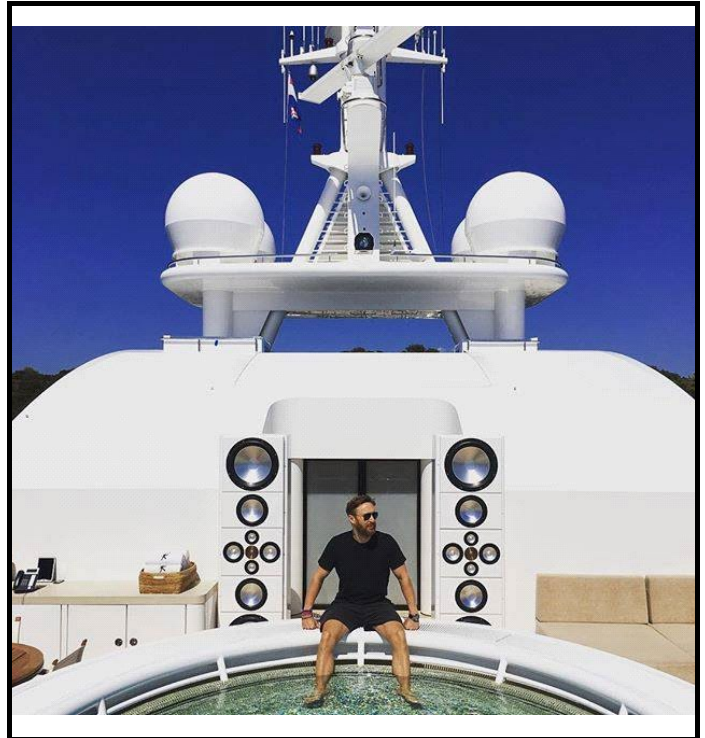
[Return To Product List](#)



## Custom Loudspeakers



Your imagination is the limit! In addition to the outdoor products listed here, CAT engineers can adapt any of our residential products for outdoor use, and any outdoor product can be customized. Whether it's a simple height/width/length modification or an imaginative fully custom-built loudspeaker of highest grade materials and finishes of your choice, CAT can make any loudspeaker you dream of. Ask your CAT sales team member for an estimate to make your custom loudspeaker project a reality!



[Previous Page](#)

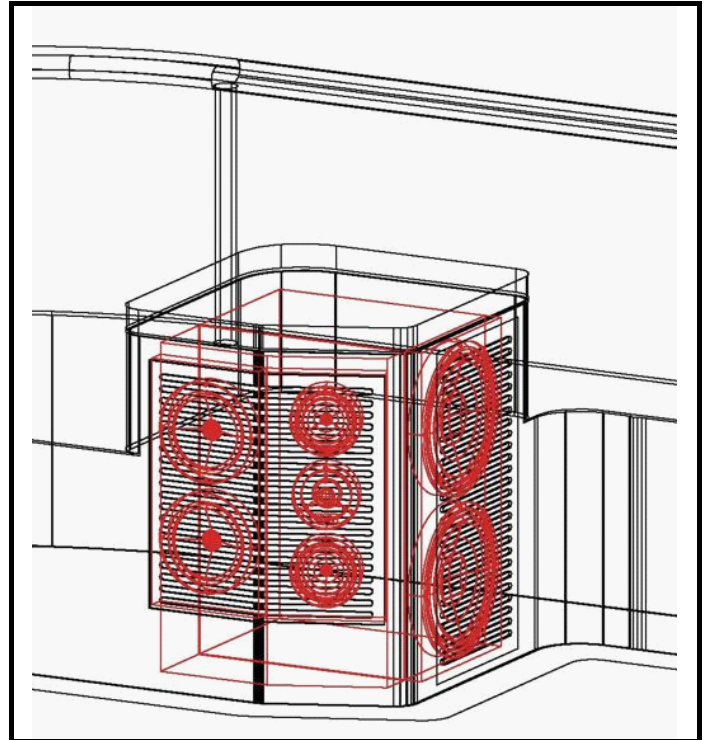
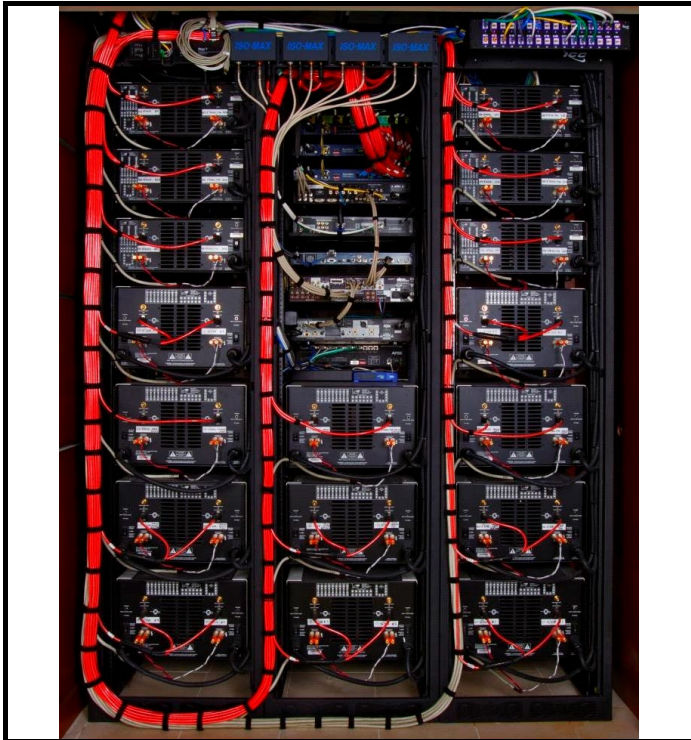
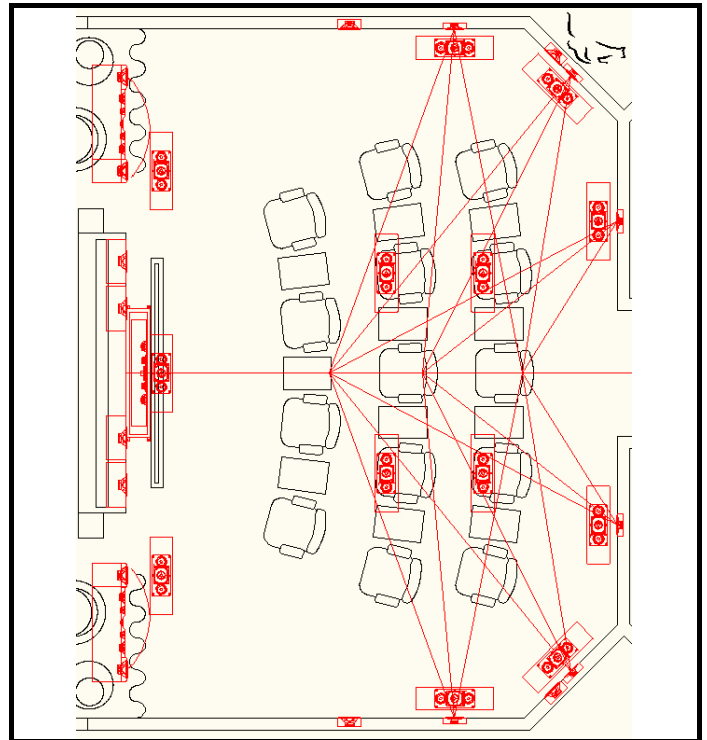
[Return To Product List](#)



## Off-Site Engineering



CAT offers engineering services including room acoustical treatment plans, loudspeaker placements and customizations, DSP programming, rack layouts and wiring schematics, custom CNC milled parts, and any other engineering work your project may need. CAT engineers can coordinate with your designers, integrators, architects, ship builders, and client teams to fully customize the best audio systems for your project.



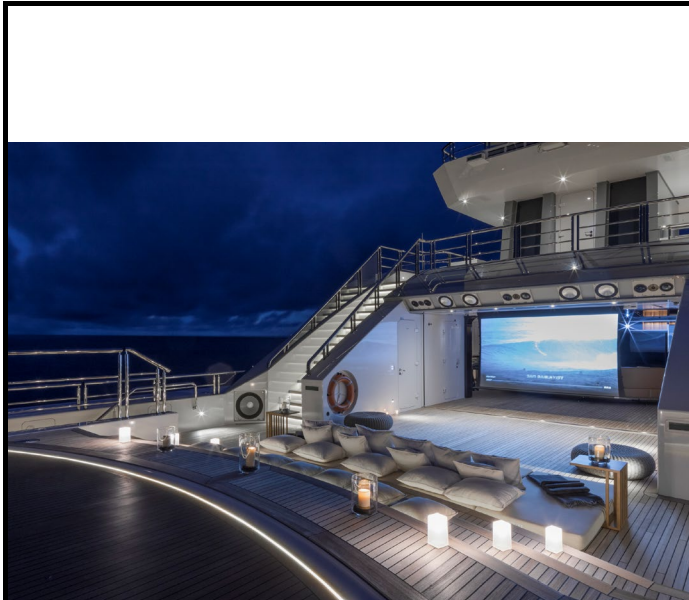
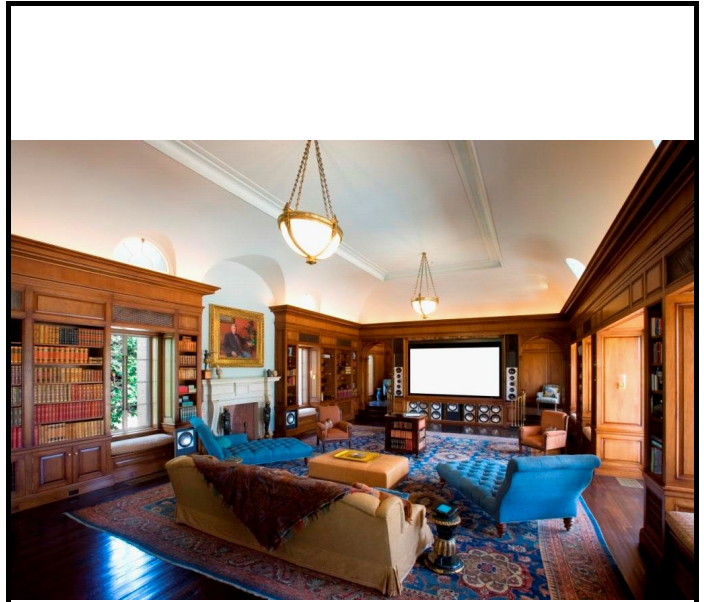
[Previous Page](#)

[Return To Product List](#)

## On-Site Engineering



After your audio system is installed, CAT engineers will travel to your project anywhere in the world, and using state-of-the-art equipment and fully customized DSP programs, we will calibrate your audio system to perform at the best possible quality and output levels. CAT engineers will work with your integration team and project managers to customize any required presets or controls, such as having different EQ settings for screen masking or window shades open or closed, motorized speaker mount positions, or even different furniture configurations or listening preferences. At the client's request, the calibration will even be custom-tuned to their exact preferences. The number of days required varies by system scope, there is a minimum of two days for any system. Transportation and lodging will be billed separately.



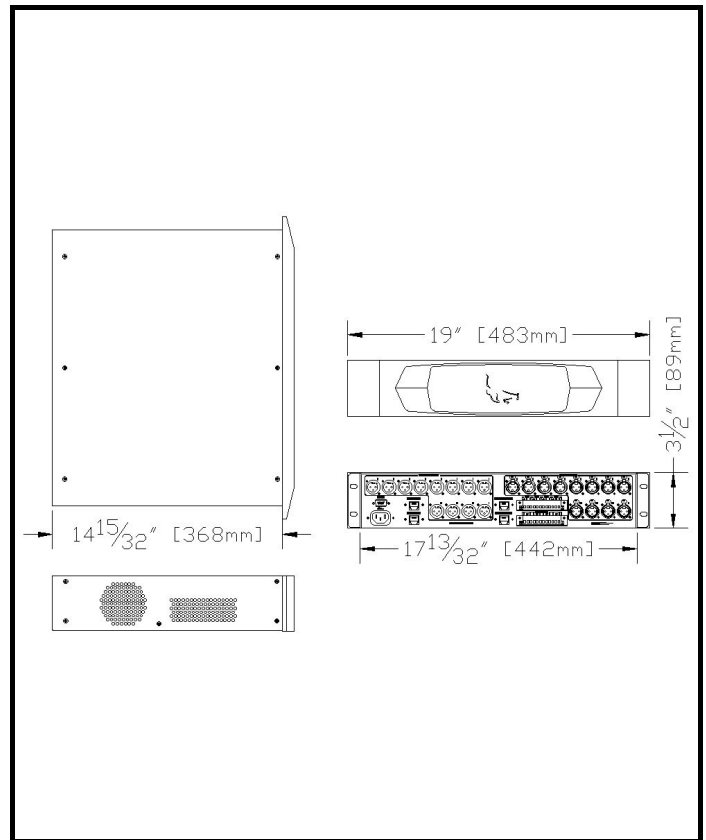
[Previous Page](#)

[Return To Product List](#)

## CAT MBX DSP 12x12



The CAT MBX DSP 12x12 is a Dante-enabled, 12-XLR-input, 12-XLR-output, high power digital signal processor. With a medical-grade linear power supply, shock-isolating mainboard mounts, and a machined billet aluminum faceplate. Two ethernet ports for control system integration, two Dante I/O ports supporting 128 Dante channels, optional USB audio port, ultra-low-noise high-fidelity ADCs and DACs.



### Specifications

**Model**  
CAT MBX DSP 12x12

**THD + Noise**  
< -95dB; 1kHz @ +15dBu

**Heat Dissipation**  
180 BTU/Hour

**Crosstalk**  
> -100dB from 20Hz-20kHz

**Raw Processing Capacity**  
500 MIPS, 6 GigaFLOPS, 2 GMACS

**Latency**  
1.04 ms

**Dynamic Range (A/D/A)**  
114 dB, A-weighted

**Mains and Power Supply**  
C13 (15 Amp)

**Delay Memory**  
174 Seconds (Sum of all channels)

**Inputs (Quantity and Type)**  
12 - XLR

**Main Rating**  
115V 15A / 230V 8A

**Outputs (Quantity and Type)**  
12 - XLR

**Frequency Response**  
20Hz-20kHz +/- 0.5dB

**Weight**  
6.3 kg

**Dante I/O**  
64 Inputs, 64 Outputs

**Dimensions (W x H x D)**  
483mm x 177mm x 419mm

[Previous Page](#)

[Return To Product List](#)

## Pro Systems



These Pro / Live Venue systems include the loudspeakers, subwoofers, amplifier, and DSP (if applicable) for a complete stereo audio system. Any of these systems can be customized to meet any budget or desire, just ask the CAT sales team for details of all your various options and pricing. Pricing shown here excludes audio source equipment, preamplifier, and cables/wires, taxes/duties, and travel.

### Small

2	CAT Elite Pro x1 Line Array	\$25,800
2	CAT Pro S4 Subwoofer	\$14,500
1	CAT 300.8 Amplifier	\$24,000

*DSP not included, requires a preamp  
capable of frequency-dividing*

<b>Total</b>	<b>\$64,300</b>
--------------	-----------------

### Medium

2	CAT Elite Pro x3 Line Array	\$77,400
4	CAT Pro S4 Subwoofer	\$29,000
2	CAT 300.8 Amplifier	\$48,000
1	CAT MBX DSP 12x12	\$22,150
2	Days of On-Site Engineering	\$15,000

<b>Total</b>	<b>\$191,550</b>
--------------	------------------

### Large

4	CAT Elite Pro x5 Line Array	\$258,000
6	CAT Pro Dual S4 Subwoofers	\$105,000
7	CAT 300.8 Amplifier	\$168,000
4	CAT MBX DSP 12x12	\$88,600
3	Days of On-Site Engineering	\$22,500

<b>Total</b>	<b>\$642,100</b>
--------------	------------------

[Previous Page](#)

[Return To Product List](#)